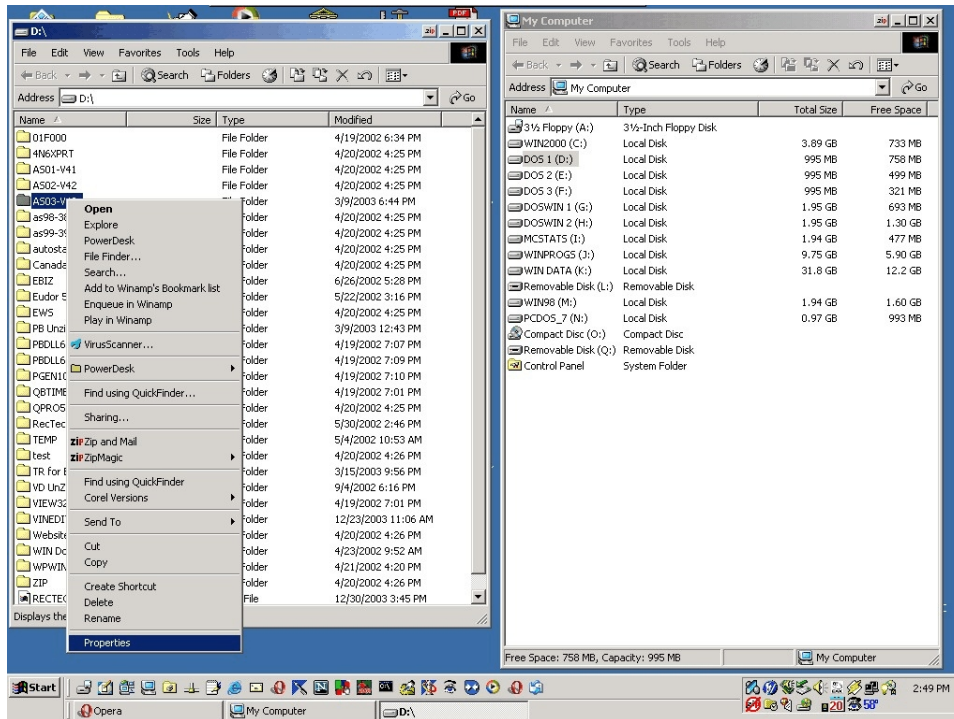
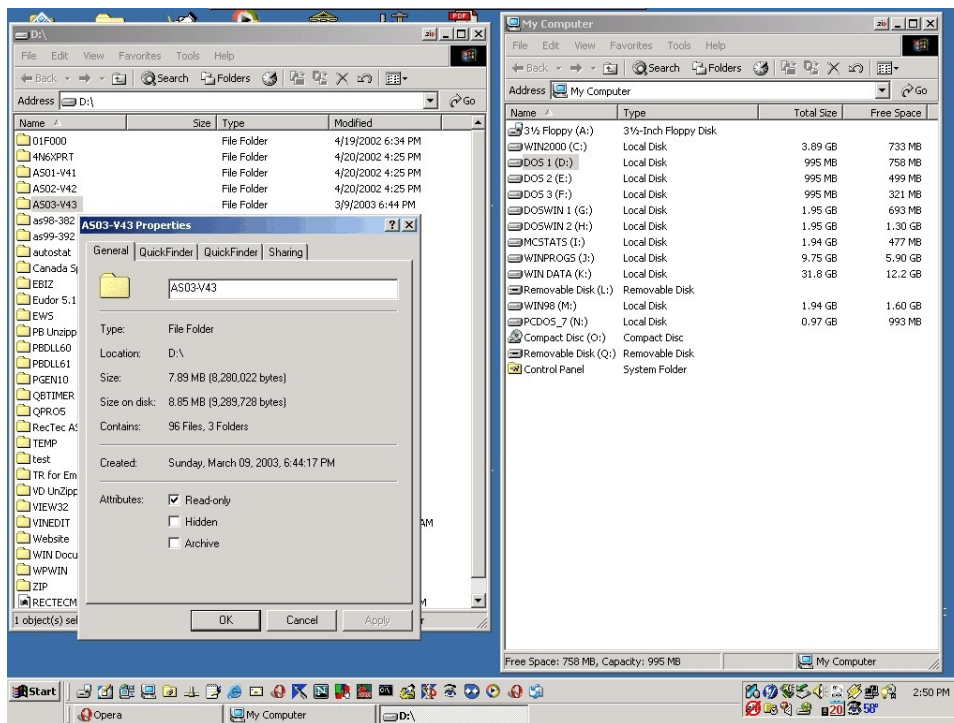


When you write a file, or a complete folder, to a CD under MicroSoft Windows, it automatically becomes checked with the READ ONLY attribute. When a folder is moved/copied to the CD, all of the files and folders contained in that folder are also marked as READ ONLY. When you move the file(s) and/or folder(s) back to a hard drive, they retain the READ ONLY attribute. If a program needs to write data to one or more of those files (Configuration files, etc.) then the program will most likely “bomb” on you.

To change this attribute, follow the following process on WINDOWS 2000/XP systems. A very similar process also works for WINDOWS 95/98/Me.

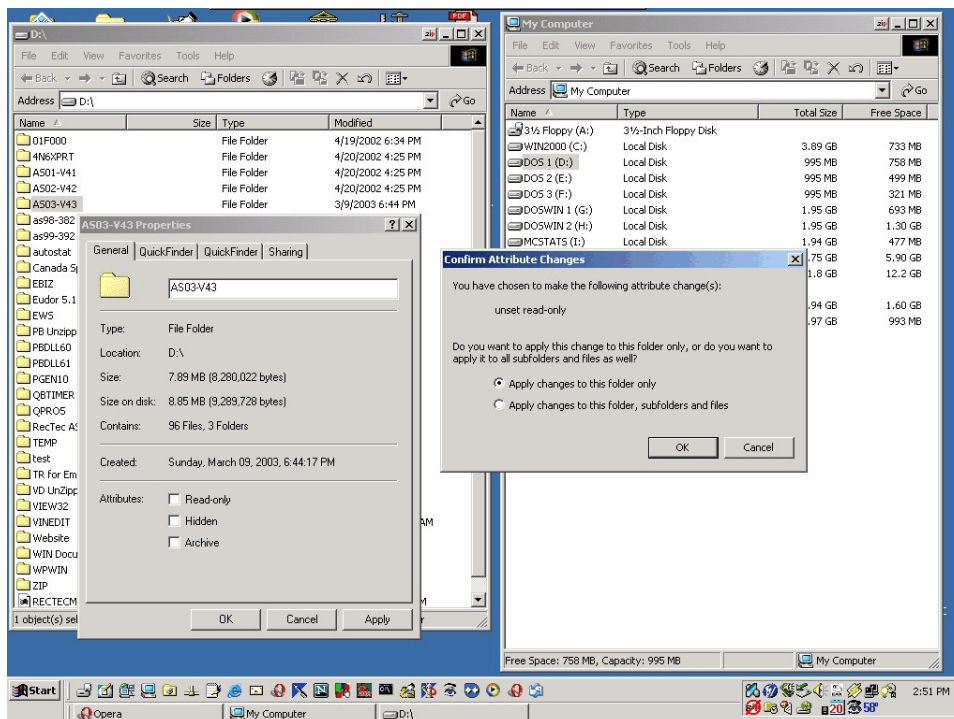


With **MY COMPUTER**, open the drive, then **RIGHT CLICK**, on the folder whose properties you want/need to change. In the case of this example, the drive is '**D**', the folder is **AS03-V43**. The **PROPERTIES** line is typically at the bottom of the help menu that will pop up. **LEFT CLICK** on the properties line to select it. Which should give you something that looks like the following:

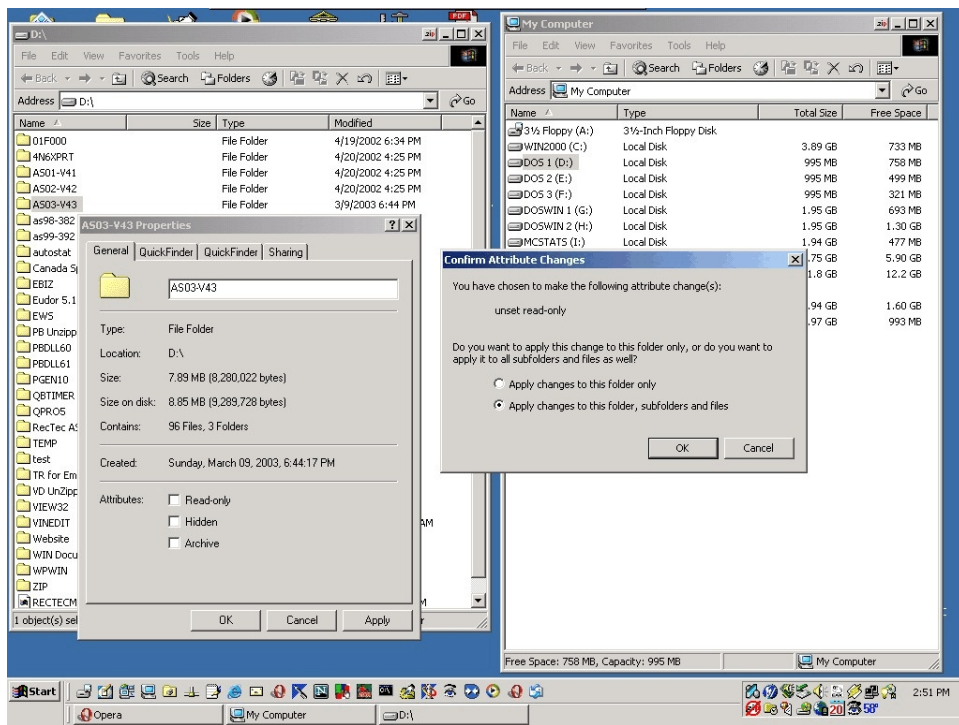


The **READ ONLY** box is checked. (If it is not, you will need to do this process twice. First checking it, then unchecking it.)

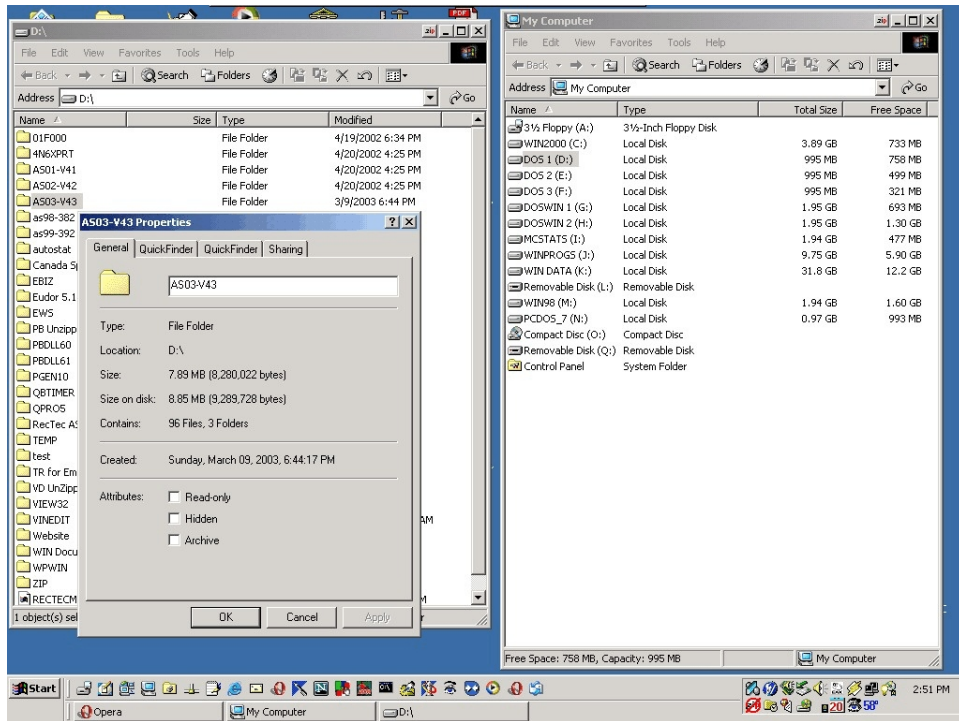
Un-check the **READ ONLY** box, then left click on the **OK** or the **APPLY** button. The procedure described is based on clicking the **APPLY** button, as that takes one more step than the **OK** button. When you click the button, it should give you something that looks like the following:



At this point, you want to change the radio button to **APPLY CHANGES TO THE FOLDER, SUB-FOLDERS AND FILES**. Which should give you something that looks like the following:



Now click on the **OK** button in the *CONFIRM ATTRIBUTE CHANGES* box. Which should give you something that looks like the following:



Finally, click **OK**, and you are done.