

COMPARISON OF RECON 3D TO CLOUD COMPARE: A BRIEF SUMMARY

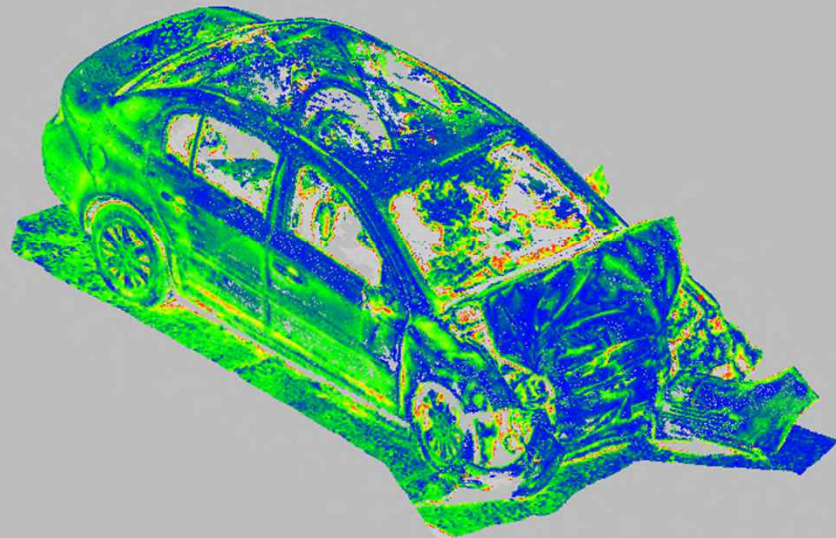
PATRICK DAVIS



PROCEDURE

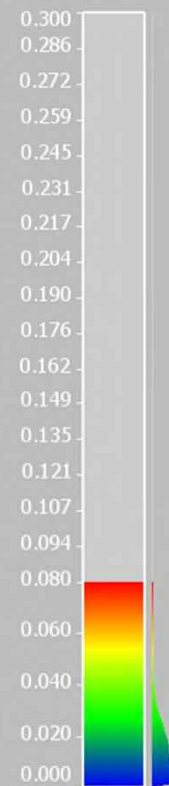
- Scans of the same subject were collected using Faro 3D Scanner and Recon 3D
- Both scans were brought into Cloud Compare
- The Recon3D scans were then aligned and scaled using the faro scan as the reference
- The cloud to cloud distance was then computed in cloud compare using the Faro scan as the reference

TEST I



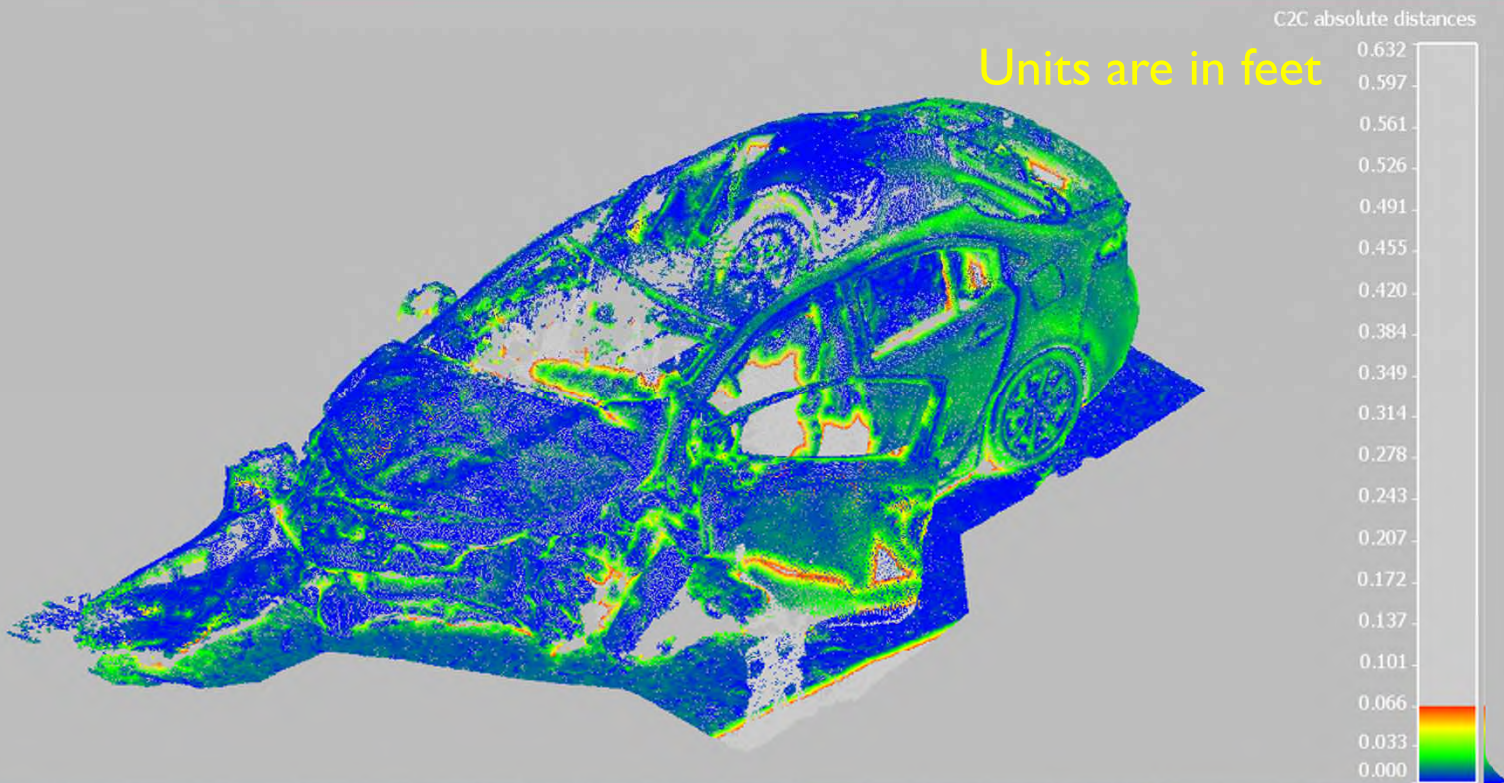
Units are in feet

C2C absolute distances [<0.3]



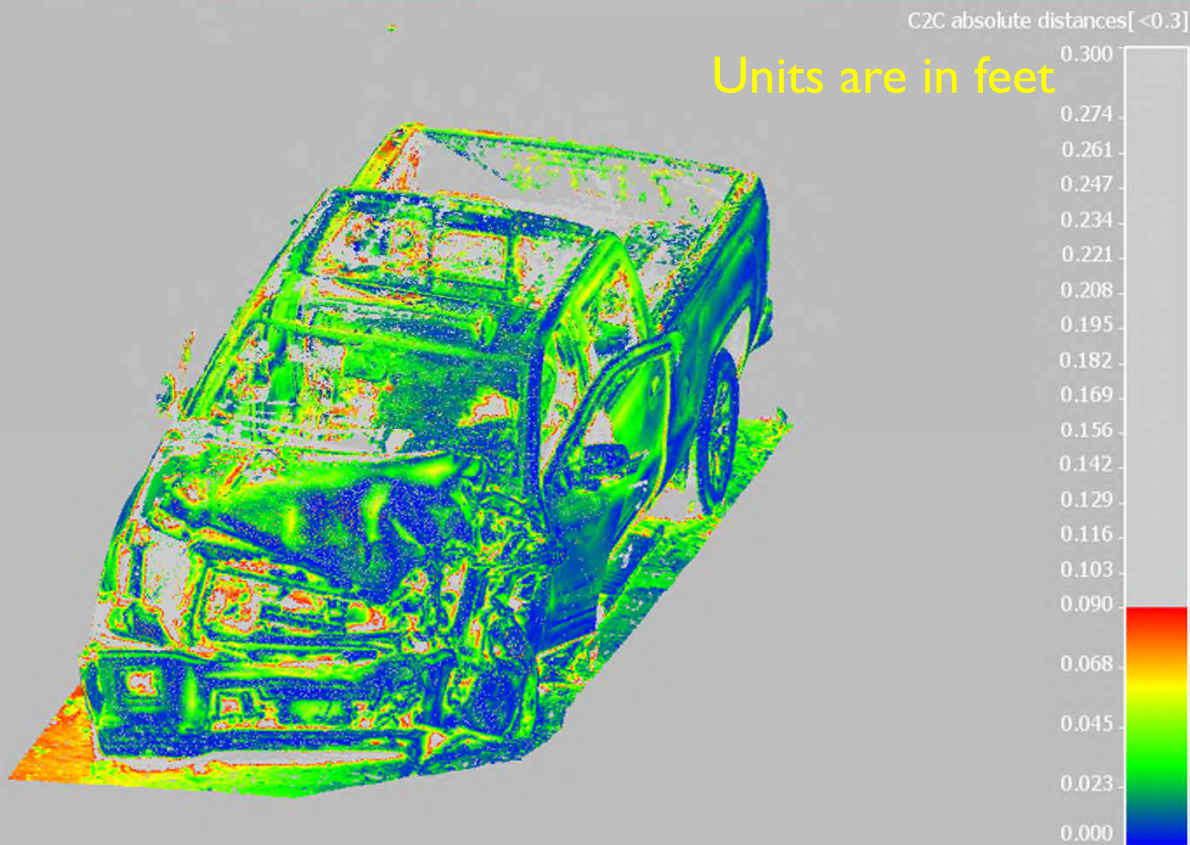
- 569,720 points
- Recon 3D scan scaled by 1.008 to match Faro scan
- 50.5% of points within 0.2 inches of faro scan
- 35.5% between 0.2 and 0.624 inches
- Around 4.7% between 0.624 and 0.96 inches
- Around 10% between 0.96 and 3.6 inches. These are mainly associated with missing segments in the Faro scan

TEST 2



- 568,483 points
- Recon 3d scan scaled by 1.00279 to match Faro scan
- 78% within 0.2 inches
- 17% within between 0.2 and 0.79 inches
- 5% greater than 0.79 inches. These points are mainly associated with missing segments in the Faro scan

TEST 3



- 965,986 points
- Recon 3D scan scaled by 1.0036 to match Faro scan
- 27.5% of points within 0.25 inches
- 37.4% between 0.25 inches and 0.72 inches
- 13.1% between 0.72 and 1.08 inches
- Around 20% greater than 1.08 inches. These points are mainly associated with missing segments in the Faro scan